

THE
ALEXANDER

Couture Collection

By RENÉ OF PARIS™



THE ALEXANDER

Couture Collection
By RENÉ OF PARIS™

ALEXANDER TURNBULL

An award-winning hairstylist who travels all over the world doing what he loves which is inspiring others through his amazing hairdressing skills. At the age of 15, Alexander left school and entered the world of hairdressing where he then went on to styling both celebrities and models for TV and catwalks which led him to win some of the most prestigious awards in the hairdressing world. He is now working with Rene of Paris and launching his own range of wigs as 'The Alexander Couture Collection' which has been a personal ambition of Alexander for over 20 years.

STYLES SHOWN FROM LEFT TO RIGHT
LUCY – Creamy Toffee-R
SUSANNE – Razberry Ice-R
ANGELA – Marble Brown-R



JULIE 1015



SUSANNE 1016



GABBY 1017



ANGIE 1018



SAFI 1019



VEE 1020



SUE 1021



LUCY 1022



ALBEE 1023



ANGELA 1024

THE
ALEXANDER
Couture Collection
By RENÉ of PARIS™

TABLE OF CONTENTS

Available Colors	5
Available Styles	6-16
Christine Headwear	17
Accessories	18-19

BRUNETTES							
	Coffee Latte	Dark Chocolate	Ginger Brown	Marble Brown	Chocolate Frost-R	Coffee Latte-R	
LR BRUNETTES					BLONDS		
	Iced Mocha-R	Marble Brown-R	Maple Sugar-R	Marble Brown-LR		Creamy Blond	Creamy Toffee
MELTED BLONDS					HYBRANT BLONDS		
	Frosti Blond	Gold Blond	Strawberry Swirl	Spring Honey		Melted Marshmallow	Champagne-R
LR BLONDS						REDS	
	Creamy Toffee-R	Mochaccino-R	Spring Honey-R	Sugar Cane-R	Nutmeg-F		Cream Toffee-LR
HYBRANT REDS							
	Macadamia-LR	Mochaccino-LR	Spring Honey-LR	Razberry Ice	Auburn Sugar-R	Irish Spice-R	Razberry Ice-R
LR REDS					GRAYS		
	Plumberry Jam-R	Crimson-LR	Plumberry Jam-LR	Razberry Ice-LR		Silver Stone	60
HYBRANT GRAYS							
	Illumina-R						

Machine Made



Elastic bands allow cap to stretch for more flexibility.

Elastic strap to adjust size.



SUSANNE 1016



GABBY 1017



ANGIE 1018

Lace Front/Lace Part



Hand-tied lace front that extends to a side part for an invisible hairline and more natural-looking part.

Elastic bands allow cap to stretch for more flexibility.



JULIE 1015

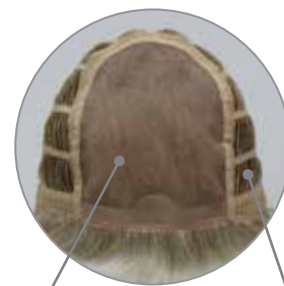


SAFI 1019



SUE 1021

Monofilament



Single layer monofilament.

Elastic bands allow cap to stretch for more flexibility.



VEE 1020



LUCY 1022



ALBEE 1023

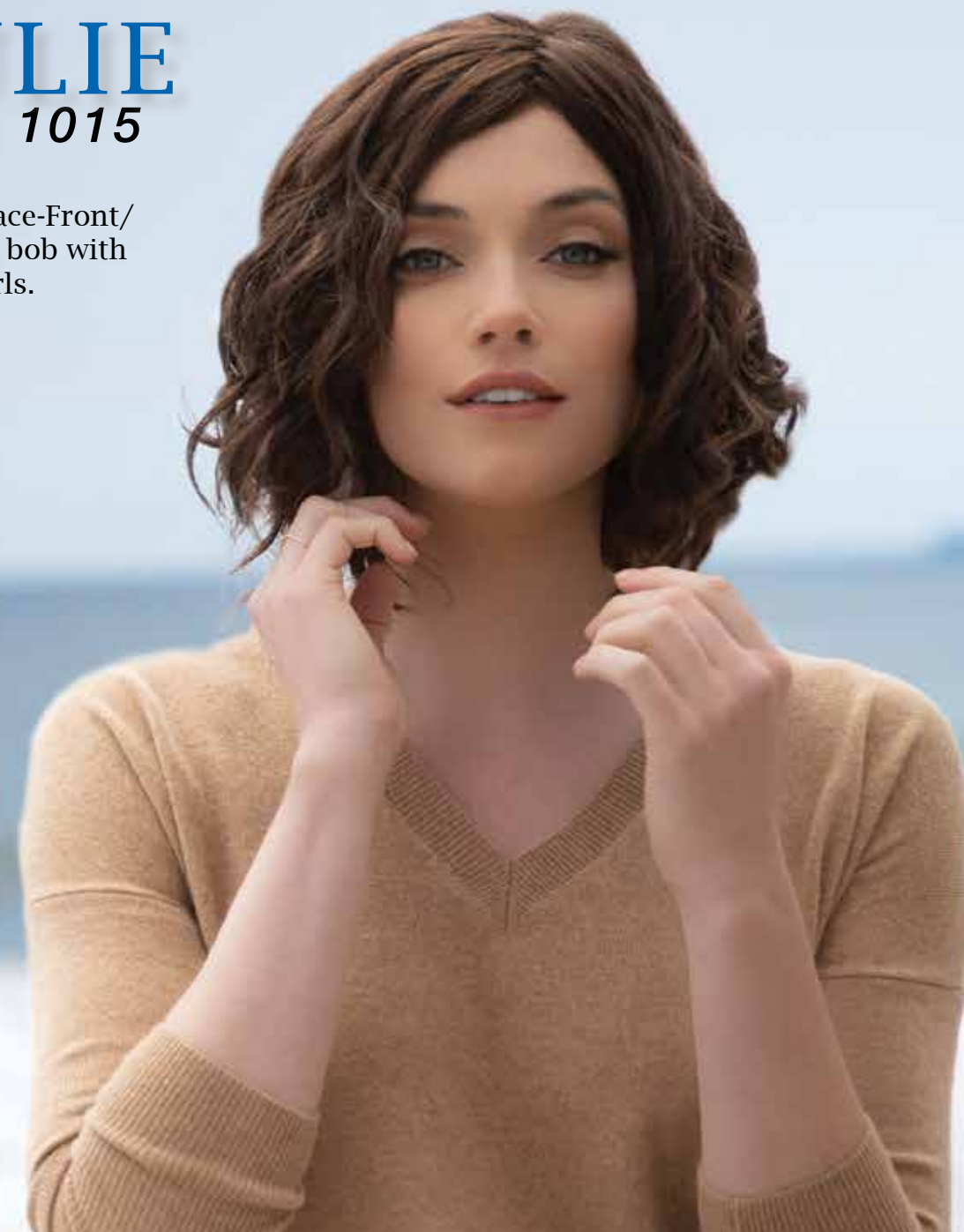


ANGELA 1024

AVAILABLE STYLES

JULIE 1015

Playful Lace-Front/Lace-Part bob with spiral curls.



COLOR SHOWN:

Ginger Brown (Top)
Melted Marshmallow (Bottom)

Cap: Lace Front + Lace Part
Fringe: 9.44" (24 cm)
Crown: 12.99" (33 cm)
Nape: 5.51" (14 cm)
Weight: 4.26 oz (121 g)

BRUNETTES:

Coffee Latte
Dark Chocolate
Ginger Brown

HYBRANT BRUNETTES:

Marble Brown-R

HYBRANT BLONDS:

Creamy Toffee-R

Mochaccino-R

Spring Honey-R

LR BLONDS:

Macadamia-LR

MELTED:

Melted Marshmallow

REDS:

Razberry Ice

HYBRANT REDS:

Plumberry Jam-R



SUSANNE

1016

This classic cut has short layers with side swept fringe and tapered nape.



COLOR SHOWN:
Razberry Ice-R (Top)
Champagne-R (Bottom)

Cap: Machine Made
Fringe: 5.51" - 7.08"
(14-18 cm)
Crown: 4.72" (12 cm)
Nape: 2.36" (6 cm)
Weight: 2.46 oz (70 g)

BRUNETTES:
Dark Chocolate

HYBRANT BRUNETTES:
Chocolate Frost-R
Coffee Latte-R
Iced Mocha-R
Maple Sugar-R

BLONDS:
Creamy Blond

HYBRANT BLONDS:
Champagne-R
Creamy Toffee-R
Nutmeg-F

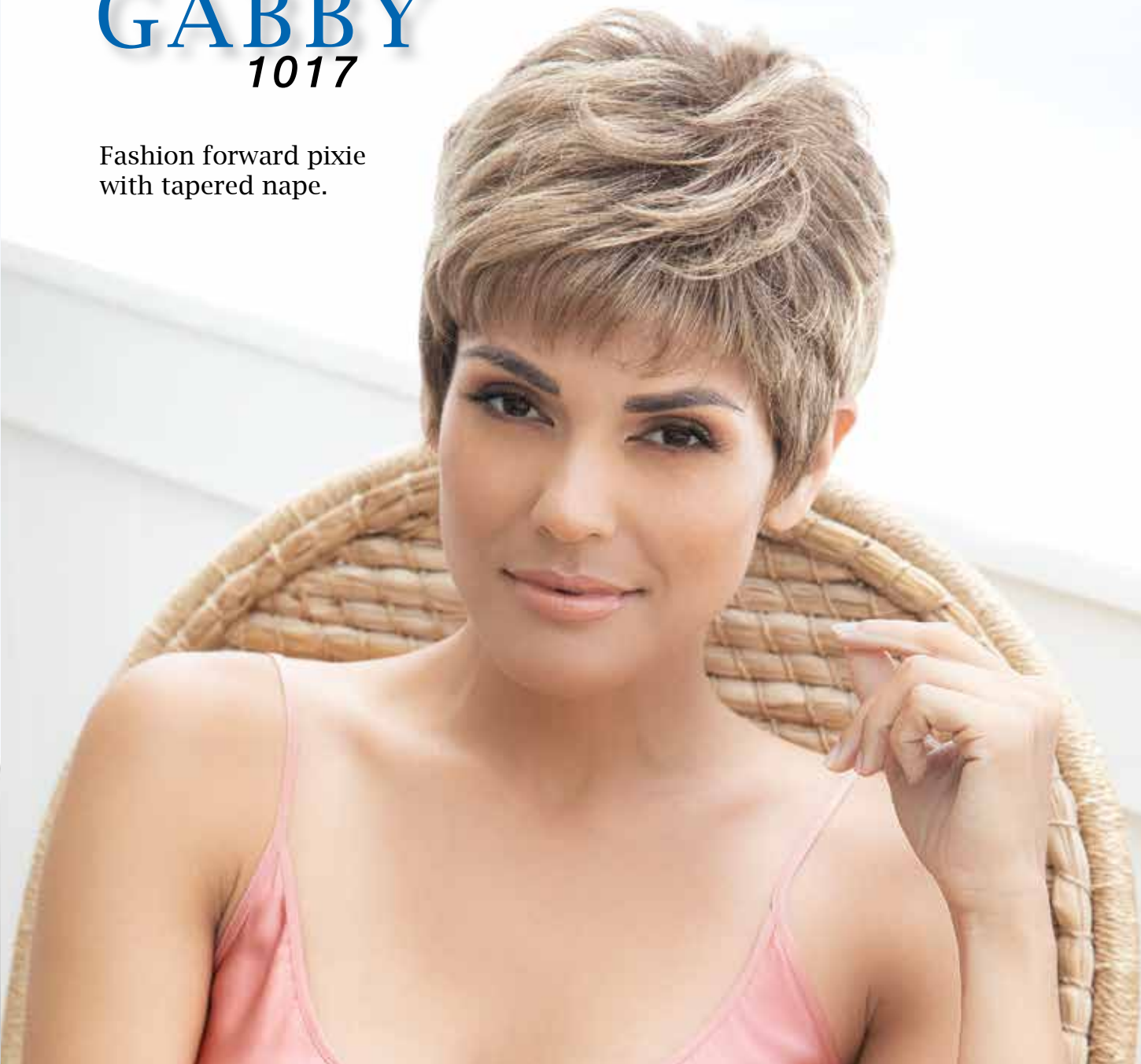
HYBRANT REDS:
Razberry Ice-R

GRAYS:
Silver Stone

GABBY

1017

Fashion forward pixie with tapered nape.



COLOR SHOWN:
Spring Honey (Top)
Silver Stone (Bottom)

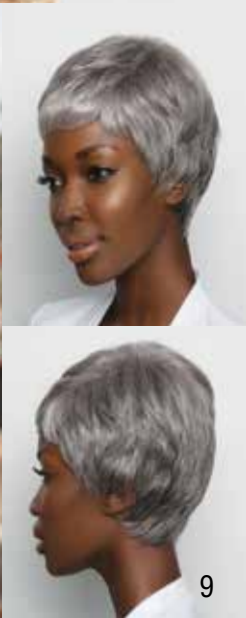
Cap: Machine Made
Fringe: 2.36" (6 cm)
Crown: 4.33" (11 cm)
Nape: 2.36" (6 cm)
Weight: 2.04 oz (58 g)

BRUNETTES:
Dark Chocolate
Marble Brown

BLONDS:
Creamy Blond
Creamy Toffee
Frosti Blond
Gold Blond
Strawberry Swirl
Spring Honey

HYBRANT BLONDS:
Champagne-R

GRAYS:
Silver Stone
60



ANGIE

1018

Sleek A-line cut
with full fringe.



COLOR SHOWN:
Dark Chocolate (Top)
Creamy Toffee-R (Bottom)

Cap: Machine Made
Fringe: 3.93" (10 cm)
Crown: 6.29" (16 cm)
Nape: 1.57" (4 cm)
Weight: 3.35 oz (95 g)

BRUNETTES:
Dark Chocolate
Coffee Latte

HYBRANT BRUNETTES:
Chocolate Frost-R
Iced Mocha-R
Marble Brown-R
Maple Sugar-R

BLONDS:
Creamy Blond

HYBRANT BLONDS:
Creamy Toffee-R
Mochaccino-R
Spring Honey-R

LR BLONDS:
Macadamia-LR

SAFI

1019

Salon inspired bob
with beach waves.



COLOR SHOWN:
Melted Marshmallow

Cap: Lace Front + Lace Part
Fringe: 10.23" - 11.02"
(26 cm - 28 cm)
Crown: 9.84" (25 cm)
Nape: 2.36" (6 cm)
Weight: 3.52 oz (100 g)

BRUNETTES:
Coffee Latte
Dark Chocolate
Ginger Brown

LR BRUNETTES:
Marble Brown-LR

HYBRANT REDS:
Auburn Sugar-R

MELTED BLONDS:
Melted Marshmallow

HYBRANT BLONDS:
Champagne-R
Creamy Toffee-R

LR BLONDS:
Mochaccino-LR
Spring Honey-LR

LR REDS:
Raspberry Ice-LR
Plumberry Jam-LR



VEE 1020

Runway inspired
asymmetric cut
with bouncy curls.



COLOR SHOWN:
Plumberry Jam-LR (Top)
Illumina-R (Bottom)

Cap: Monofilament
Fringe: 5.51" - 9.05"
(14 cm - 23 cm)
Crown: 7.48" (19 cm)
Nape: 1.57" (4 cm)
Weight: 2.64 oz (75 g)

BRUNETTES:
Dark Chocolate
Coffee Latte

**HYBRANT
BRUNETTES:**
Marble Brown-R

HYBRANT GRAYS:
Illumina-R

LR REDS:
Plumberry Jam-LR

BLONDS:
Creamy Blond

HYBRANT BLONDS:
Champagne-R
Creamy Toffee-R
Mochaccino-R
Spring Honey-R

LR BLONDS:
Macadamia-LR

SUE 1021

Classic Lace-Front/
Lace-Part bob with
fringe.



COLOR SHOWN:
Creamy Toffee-LR (Top)
Marble Brown-LR (Bottom)

Cap: Lace Front + Lace Part
Fringe: 3.54" (9 cm)
Crown: 9.05" (23 cm)
Nape: 1.57" (4 cm)
Weight: 2.89 oz (82 g)

BRUNETTES:
Coffee Latte
Dark Chocolate
Ginger Brown

**HYBRANT
BRUNETTES:**
Chocolate Frost-R

BLONDS:
Creamy Blond

LR BLONDS:
Creamy Toffee-LR

HYBRANT BLONDS:
Champagne-R
Mochaccino-R
Spring Honey-R

LR BRUNETTES:
Marble Brown-LR

LR REDS:
Plumberry Jam-LR

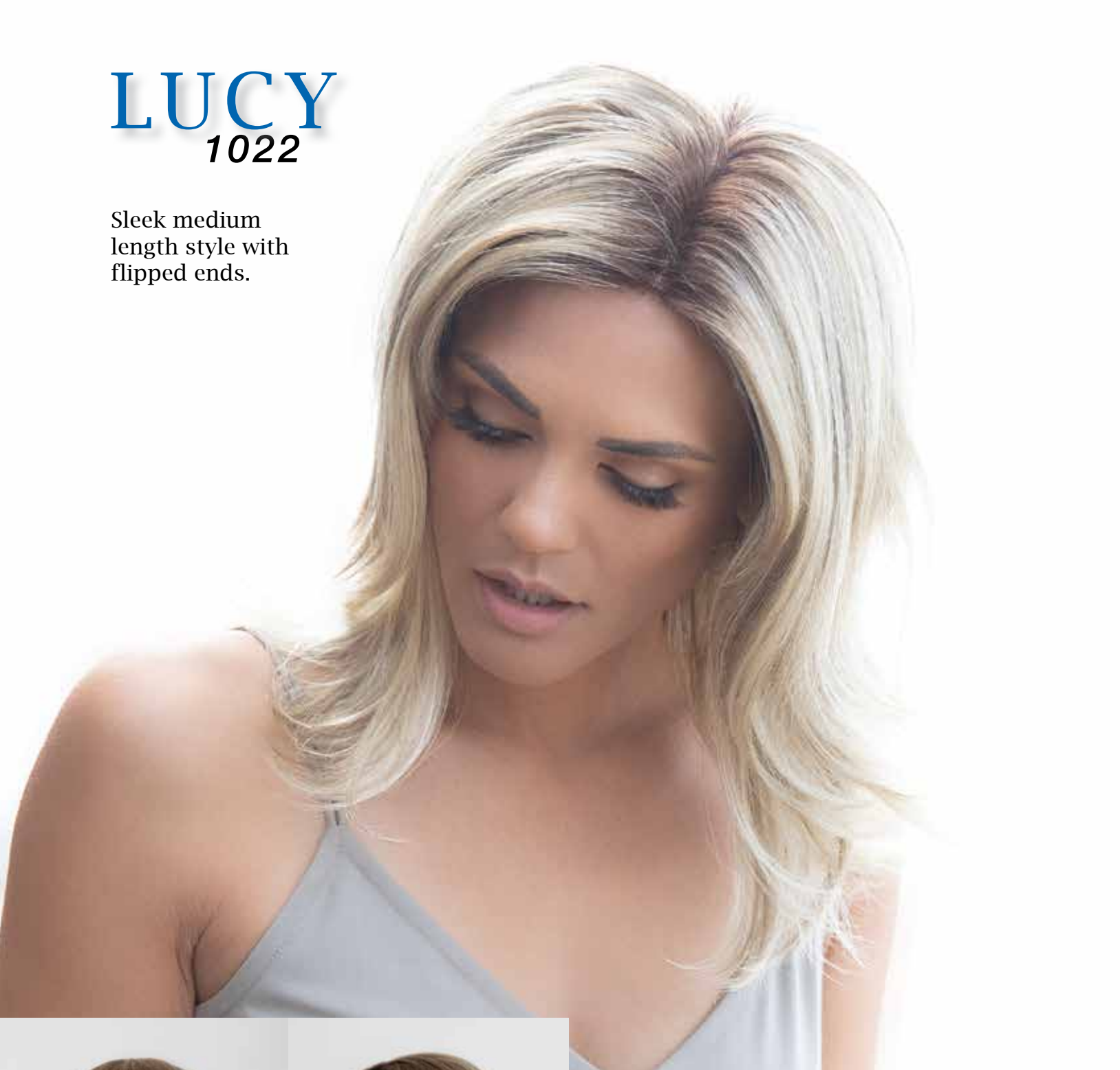
HYBRANT REDS:
Razberry Ice-R



LUCY

1022

Sleek medium length style with flipped ends.



COLOR SHOWN:
Champagne-R (Top)
Creamy Toffee-R (Bottom)

Cap: Monofilament
Fringe: 5.51" (14 cm)
Crown: 11.02" (28 cm)
Nape: 8.26" (21 cm)
Weight: 5.36 oz (152 g)

BRUNETTES:
Coffee Latte
Dark Chocolate
Ginger Brown

HYBRANT BRUNETTES:
Marble Brown-R

BLONDS:
Creamy Blond

HYBRANT BLONDS:
Champagne-R
Creamy Toffee-R
Mochaccino-R
Spring Honey-R

HYBRANT REDS:
Irish Spice-R

LR REDS:
Plumberry Jam-LR



ALBEE

1023

A classic short style with feathered layers.



COLOR SHOWN:
Razberry Ice-R (Top)
Sugar Cane-R (Bottom)

Cap: Monofilament
Fringe: 3.54" (9 cm)
Crown: 5.11" (13 cm)
Nape: 2.36" (6 cm)
Weight: 2.15 oz (61 g)

BRUNETTES:
Coffee Latte
Dark Chocolate

HYBRANT BRUNETTES:
Chocolate Frost-R
Iced Mocha-R
Maple Sugar-R

GRAYS:
Silver Stone

BLONDS:
Creamy Blond

HYBRANT BLONDS:
Champagne-R
Creamy Toffee-R
Nutmeg-F
Sugar Cane-R

HYBRANT REDS:
Crimson-R
Razberry Ice-R



ANGELA

1024

Flirty long layers with wispy fringe.



COLOR SHOWN:
Champagne-R

Cap: Monofilament
Fringe: 3.93"- 4.72"
(10 cm - 12 cm)
Crown: 14.96" (38 cm)
Nape: 11.81" (30 cm)
Weight: 5.39 oz (153 g)

BRUNETTES:
Coffee Latte
Dark Chocolate

HYBRANT BRUNETTES:
Iced Mocha-R
Marble Brown-R

BLONDS:
Creamy Blond

HYBRANT BLONDS:
Champagne-R
Creamy Toffee-R
Mochaccino-R
Spring Honey-R

LR REDS:
Plumberry Jam-LR



2139-0486
Zoya V-Turban



2143-0592
SHAKTI



2138-0594
LOTUS

Christine™
HEADWEAR

Aderans Hair Goods is now the sole USA distributor
of Christine Headwear™ turbans and scarves!

A light collection made in the best possible quality.

Contact Your Sales Consultant
800.353.7363

ACCESSORIES



8128
18" WHITE
MANNEQUIN



8129
18" GRAY
MANNEQUIN
with logo



8130
18" BLACK
MANNEQUIN
with logo



8131
18" WHITE
MANNEQUIN
with logo



8119
17" MANNEQUIN



8123
21" MANNEQUIN



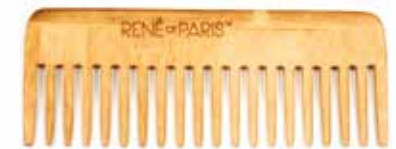
9580
WIG CAP
Available Colors:
Beige, Black, and Brown



9587
ROP WIG LIFT COMB



9591
ROP FOLDING BRUSH



9589
ROP BAMBOO BASIN COMB



9590
ROP TAIL COMB



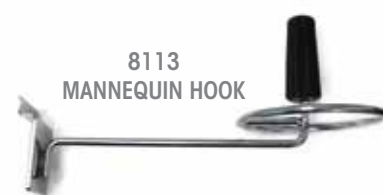
965
WIRE BRUSH



9588
ROP BAMBOO
DETANGLE COMB



9586
BULK BEIGE
WIG CAP
(SOLD IN 12 PCS)



8113
MANNEQUIN HOOK



9560
STYROFOAM HEAD
12pc package



9585
SILVER COMB CLIP
(SOLD IN 12 PCS)



Convenient "snap together" stand for wig storage or service.



9582 WIG STAND PACKAGE

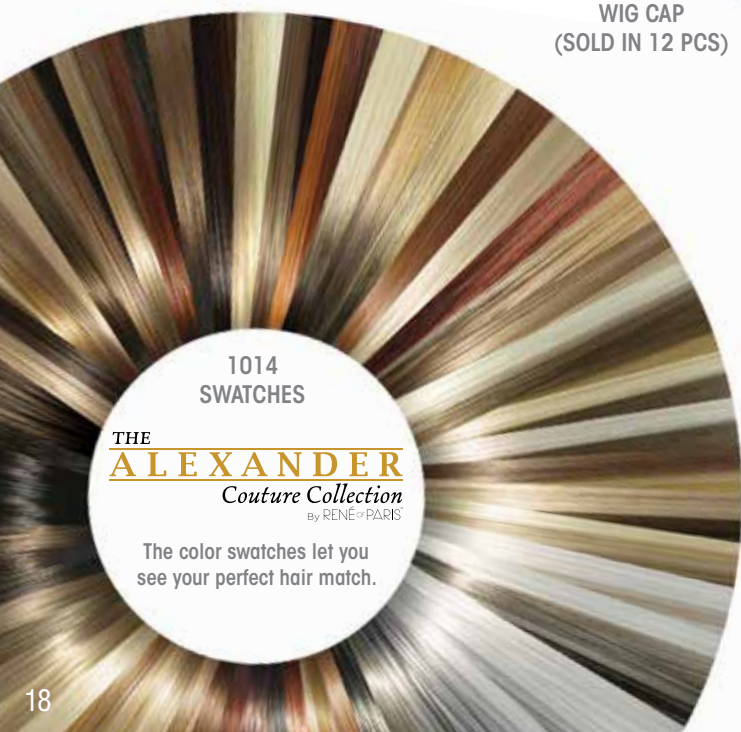
3pc package contains colors: Black, Blue & Gray



Sold separately: 9583 BLACK, BLUE, GRAY



9584
ROP WIG STAND



1014
SWATCHES

THE
ALEXANDER
Couture Collection
by RENÉ of PARIS

The color swatches let you
see your perfect hair match.



9950
ROP Prepare
Shampoo
8 oz.



9953
ROP Dual
Conditioner
8 oz.



9951
ROP Revive Liquid
Enhancement
8 oz.



9952
ROP Protect
Holding Spray
8 oz.

RENÉ of PARIS™ MAINTENANCE TOOLS

Rene of Paris Prepare Shampoo

This luxurious shampoo is formulated with the ultimate in moisture replenishing cleansers. Rene of Paris Prepare Shampoo helps maintain the smoothness, strength and polish of your wig/hairpiece.

The gentle combination of plant and vegetable extracts, along with natural essential oils and vitamins, provides a gentle but thorough cleansing of your wig/hairpiece. The results will revolutionize how you feel.

Rene of Paris Dual Conditioner

Rene of Paris Conditioner for synthetic wigs revitalizes dull hair leaving it softer, shinier and easy to manage.

Rene of Paris Revive Liquid Enhancement

The finest advanced liquid developed for synthetic fiber hair. Rene of Paris Revive Liquid Enhancement will revive your wig/hair piece and give it the brand new feel.

Not only helps eliminate frizz while adding luster, texture and volume, but also protects your wig/hairpiece from the daily stresses.

Rene of Paris Protect Holding Spray

The final stop in maintaining and styling your wig/hairpiece. This holding spray adds shine while gently, yet firmly, holding your desired style.

We are delighted that you have chosen to become one of our valued customers. We appreciate your business as well as any inquiries regarding the following:

APPLICABILITY:

1. The following terms and conditions ("Terms") are the only terms which govern the sale of the goods ("Goods") by Aderans Hair Goods, Inc. ("AHG") to its customers (each referred to hereafter as "Buyer," or "You"). Notwithstanding anything herein to the contrary, if a written contract signed by both parties is in existence covering the sale of the Goods covered hereby, the terms and conditions of said contract shall prevail to the extent they are inconsistent with these Terms.

2. These Terms, together with the applicable invoice and the Statement of Policy defined below (collectively, this "Agreement"), comprise the entire agreement between the parties, and supersede all prior or contemporaneous understandings, agreements, negotiations, representations and warranties, and communications, both written and oral. These Terms prevail over any of Buyer's general terms and conditions of purchase regardless whether or when Buyer has submitted its purchase order or such terms. Acceptance of Buyer's purchase order or fulfillment of Buyer's order does not constitute acceptance of any of Buyer's terms and conditions and does not serve to modify or amend these Terms.

ACCEPTANCE OF PURCHASE ORDER. AHG has the right, in its sole discretion, to accept or reject any purchase order issued by You. AHG may accept any purchase order by confirming the order (whether by written confirmation, invoice or otherwise) or by delivering the Goods, whichever occurs first. No purchase order is binding on AHG unless accepted by AHG.

PRICES. You shall purchase the Goods from AHG at the prices set forth in AHG's price list in effect at the time that AHG accepts Your purchase order ("Prices"). Prices are exclusive of, and You are solely responsible for, and shall pay, any and all taxes, with respect to, or measured by, the manufacture, sale, shipment, use or Price of the Goods; provided, however, that You shall not be responsible for any taxes imposed on, or with respect to, AHG's income, revenues, gross receipts, personnel or real or personal property or other assets.

PAYMENT TERMS: AHG accepts payment by Visa, MasterCard, AMEX, Discover, money order, wire transfer and COD. Upon approval, credit terms may be available.

CREDIT PURCHASES: If You wish to apply for an AHG 30-day open account (NET -30), contact Your AHG sales representative and request a credit application.

SHIPPING/HANDLING: You will pay for all shipping charges and insurance costs. AHG offers shipping via UPS next day air, 2-3 day air, and ground. There is a handling charge of \$1.00 for all orders. For each purchase order accepted by AHG, AHG may, in its sole discretion, without liability or penalty, make partial shipments of Goods to You. Each shipment will constitute a separate sale and You will pay for the units shipped whether such shipment is in whole or partial fulfillment of a purchase order.

TRANSFER OF TITLE & RISK OF LOSS: Title passes to You upon delivery of the Goods

to the address You specified in the purchase order. Risk of loss or damage to the Goods passes to You upon AHG's tender of such units to the carrier at AHG's location in Chatsworth, CA.

STATEMENT OF POLICY: You must comply with the Statement of Policy and Guidelines for Using Aderans' Trademarks and Copyrights (the "Statement of Policy") which was provided to You and which may be modified or updated by AHG from time to time in its sole discretion.

RETURN POLICY: Returns will not be accepted unless pre-authorized by (AHG). Requests must be made within 30 days from receipt of Goods. Upon approval and receipt of the authorization for return label, Goods meeting the following conditions may be returned for an exchange or direct credit to Your account (freight prepaid by Buyer). NO cash refunds! If an item is to be exchanged, new shipping and handling charges will be added.

1. A copy of Your invoice must accompany all returns. The authorization for return label must be placed on the outside of the box (complete with the authorization number) and Your return address. If not, the box will be refused.

2. Returned Goods must be in MINT CONDITION. Mint condition is defined by AHG as: no missing tags or labels, the hair net is not removed, item(s) are not combed/ fluffed or tried on by a customer. All returns must be in original shipping box. There is a restocking fee of \$10.00 for EACH piece returned.

3. AHG has carefully designed its product packaging to protect the product integrity. AHG is not responsible for damage to or problems with any product where the product and/or shipment packaging has been changed per Your request. No returns will be accepted under these conditions.

4. Shipping and handling fees are non-refundable.

5. Any DISCONTINUED items are not returnable.

6. AHG is not responsible for lost return packages.

It is recommended that You keep proper Proof-of-Delivery. Goods not meeting the above stipulations will be refused. AHG will not accept returns more than 30 days after receipt of Goods. If there is a factory defect or an incorrectly shipped item due to our error, a full exchange or credit will be applied directly to Your account. Note: If an item is returned for a "defective" credit and upon examination found not to be defective, credit will only be given for the item's original price (providing it still meets the above standards), and a \$10.00 restocking charge will be applied. Any additional product not authorized for return will be sent back.

NOTE: Colors shown in this catalog may not reflect actual color of product. RENÉ OF PARIS is a trademark or registered trademark of Aderans Hair Goods, Inc. and/or Aderans Co., Ltd. in the United States and other countries.

CHRISTINE HEADWEAR and the Christine Headwear logo are trademarks and/or registered trademarks of The Headwear Company in the United States and other countries.



THE ALEXANDER

Couture Collection

By RENÉ OF PARIS™

2019-2020 THE ALEXANDER COLLECTION
BY RENÉ OF PARIS™

Distributed by Aderans Hair Goods
9135 Independence Avenue
Chatsworth, CA 91311 USA
Toll Free: 800.353.7363
Fax: 818.885.0134

FRONT COVER: SAFI IN MELTED MARSHMALLOW
BACK COVER: SAFI IN MARBLE BROWN-LR

www.reneofparis.com

FOLLOW US ON:



ROP ALEXANDER CATALOG 2019-2020



2109046